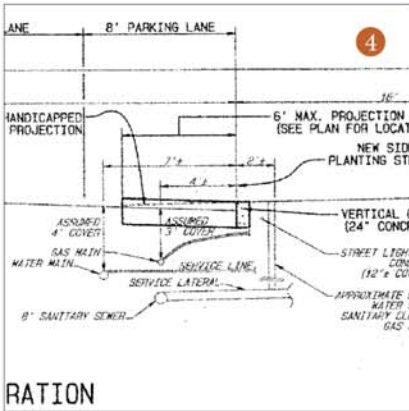
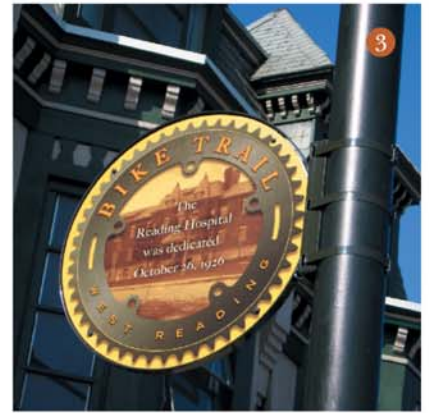
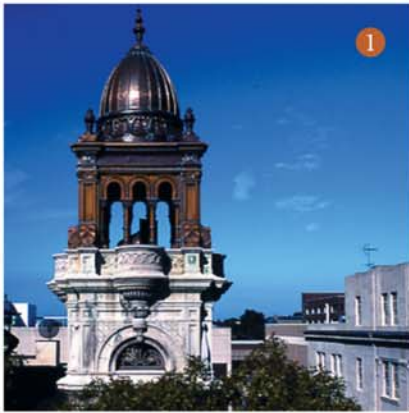


COMMUNITY REVITALIZATION TEAM

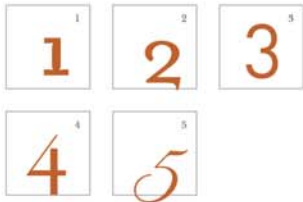


	NAME	AFFILIATION	WEB
①	Michael Jay Kautter	KAUTTER & KELLEY ARCHITECTS	www.kautterkelley.com
②	Howard Jay Supnik	HOWARD JAY SUPNIK LANDSCAPE ARCHITECT	www.howardjaysupnik.com
③	Jeff Gernsheimer	PARTNERS DESIGN, INC.	www.partnersdesign.net
④	Robert B. Ludgate Sr.	LUDGATE ENGINEERING CORPORATION	www.ludgate-eng.com
⑤	Sam Loth	COMMUNITY DEVELOPMENT SPECIALIST	www.westreadingmainstreet.org

COMMUNITY REVITALIZATION TEAM The Community Revitalization Team offers a complete package of services for Main Street and community revitalization projects. From grant writing to improved traffic flow to light poles, trees, fresh building facades and new banners, signs, and promotional material, the Team will customize the project around the unique characteristics that encompass your community.



COMMUNITY REVITALIZATION TEAM



	NAME	AFFILIATION	WEB
①	Michael Jay Kautter	KAUTTER & KELLEY ARCHITECTS	www.kautterkelley.com
②	Howard Jay Supnik	HOWARD JAY SUPNIK LANDSCAPE ARCHITECT	www.howardjaysupnik.com
③	Jeff Gernsheimer	PARTNERS DESIGN, INC.	www.partnersdesign.net
④	Robert B. Ludgate Sr.	LUDGATE ENGINEERING CORPORATION	www.ludgate-eng.com
⑤	Sam Loth	COMMUNITY DEVELOPMENT SPECIALIST	www.westreadingmainstreet.org

ABOUT THE COMMUNITY REVITALIZATION TEAM

Community revitalization imparts new life, restores vitality and provides the impetus to strengthen a town’s economy. When community revitalization techniques are applied successfully in a central business district, the entire town can reap the resulting benefits.

The Community Revitalization Team offers comprehensive services that address the unique needs of your community. Engineering and architectural applications improve the function, accessibility and capacity of a town’s business district. Landscape architecture and visual design elements improve aesthetics, safety and public circulation. Project continuity is ensured by professional management with the capacity to assess the needs, determine feasibility, present capital funding and grant program options and provide appropriate organizational vehicles.

KAUTTER & KELLEY ARCHITECTS helps to ensure that the required engineering solutions are realized in a time sensitive manner and according to universal accessibility guidelines. Maintaining or building upon the aesthetic traits of the existing townscape character, the architect is called to compile all aspects of a complex planning project in a manner that is understandable and interactive with the client.

HOWARD JAY SUPNIK, Landscape Architect, offers expertise to the delicate balance between man-made interventions and the natural environment. The making of beautiful public places is a result of the creative design process, and merges design ideas like spatial definition, form, composition, sequence and texture, fragrance and sound with paving and planting materials, site furnishings, lighting and special features such as water and art. Successfully designed and executed environments are capable of enduring the rigors of daily life imposed by active commerce, engagement with public activities, and maintenance, and can provide beauty, craft and delight in an often bleak environment.

PARTNERS DESIGN, INC. brings into focus the meaningful ties between urban features, past and present, in a vibrant community. Branding, logo, and literature design is an essential aspect of communication with constituents during and after the planning process. Wayfaring signage provides a visual guide to navigating the town center. Graphic integrity is the most immediate tie between the interactive public, the streetscape and commerce. The visual elegance of the sidewalk experience is what is remembered first.

LUDGATE ENGINEERING CORPORATION provides the technical knowledge and planning skills required to implement operational and functional solutions. Infrastructure such as storm water drainage, utility access and distribution, illumination, and traffic control, as well as an astute understanding of existing topographic conditions, are the foundation of a *working* streetscape.

SAM LOTH, Community & Economic Development Specialist, provides experienced assistance with needs assessment, capital project options, grant programs, Neighborhood Improvement District development and community involvement.

The **Community Revitalization Team** is organized to provide the right formula of services for a successful project. For further information or firm profiles, please visit our website www.communityrevitalizationteam.net.